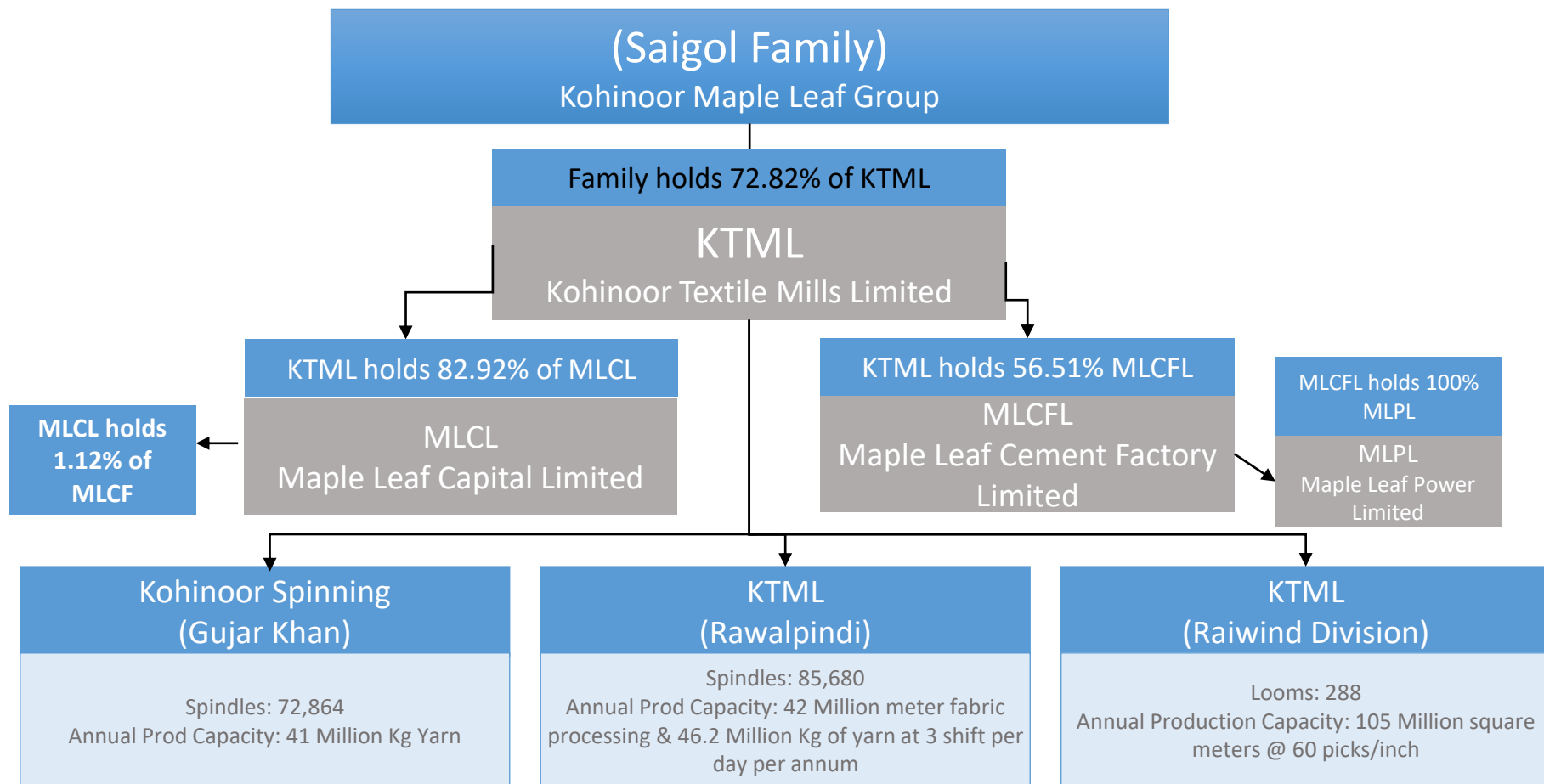


Kohinoor Textile Mills Limited

Corporate Briefing Session (CBS)

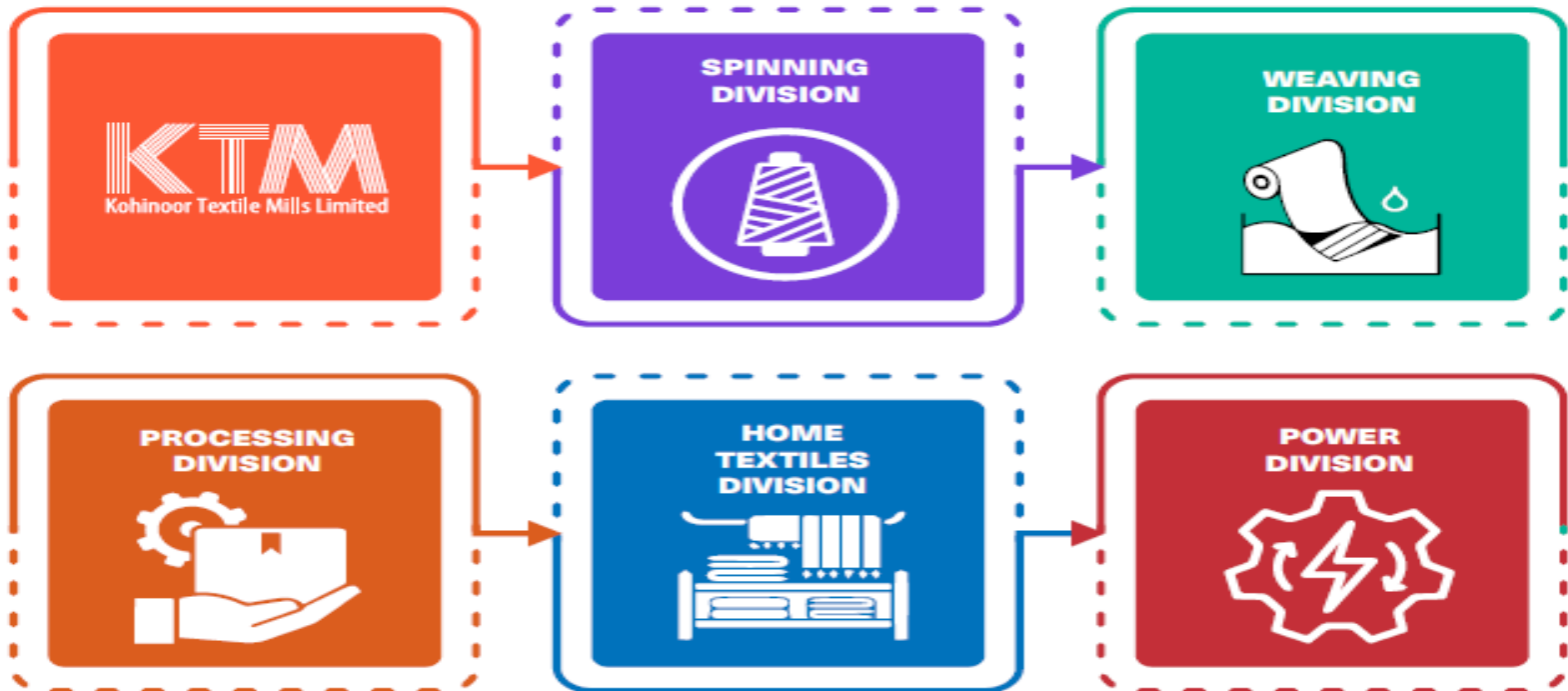
Financial Year 2022
23rd Nov 2022





COMPANY PROFILE & PRINCIPAL BUSINESS ACTIVITIES

Kohinoor Textile Mills Limited ("The Company") commenced Textile Operations in 1953 as a Private Limited Company and became a Public Limited Company in 1968.



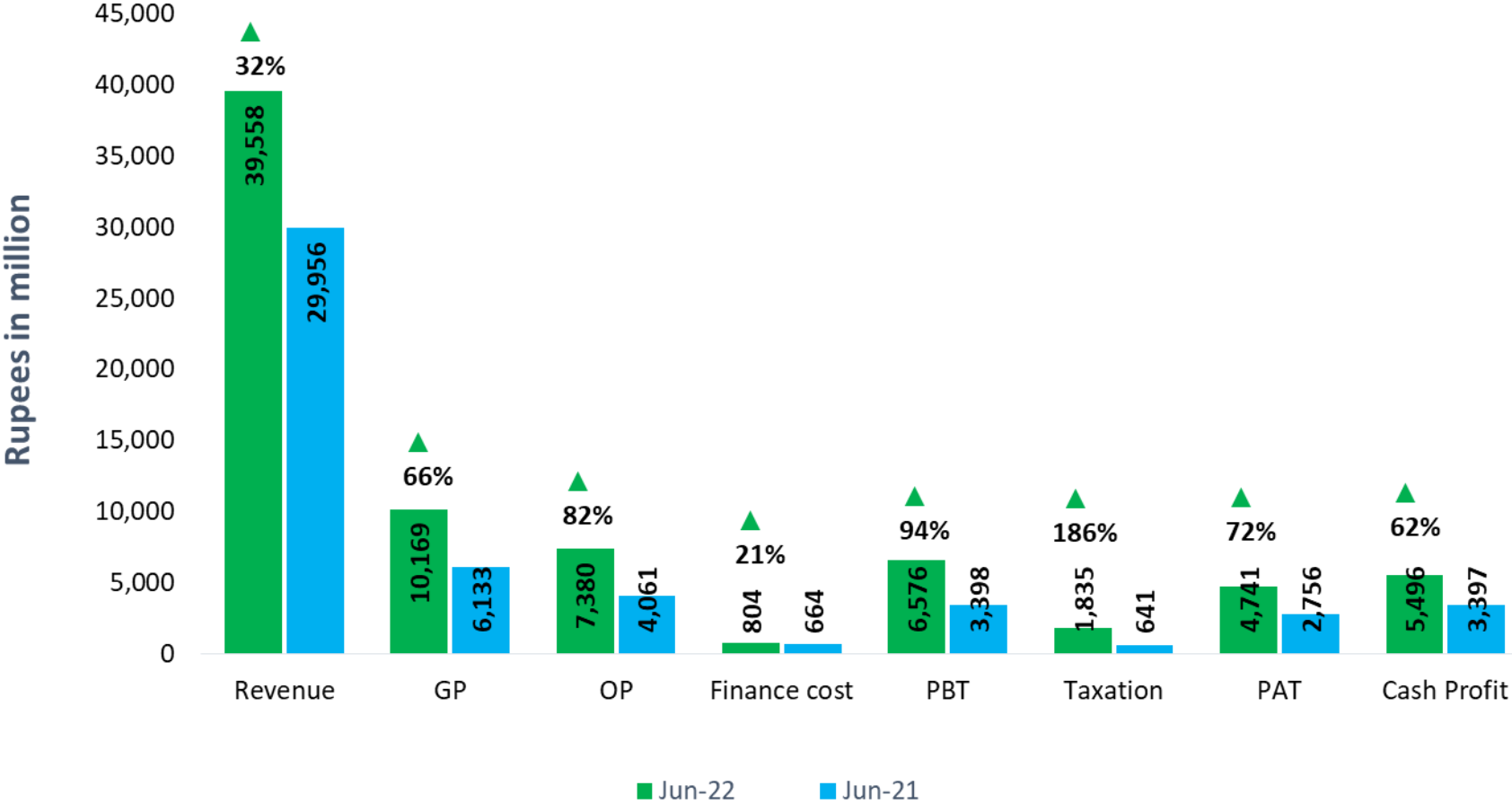
The Company's spinning production facilities now comprise 158,544 ring spindles, 384 MVS spindles, 2,712 open end rotors capable of spinning a wide range of yarn counts using cotton and Man-made fibers at Rawalpindi, Gujjar Khan and 288 looms at Raiwind capable of weaving a wide range of greige fabrics. The processing facilities at the Rawalpindi unit are capable of dyeing and printing fabrics for the home textile market. The stitching facilities produce a diversified range of home textiles for the export market. Both the dyeing and stitching facilities are being augmented to take advantage of greater market access. Fully equipped laboratory facilities for quality control and process optimization have been setup at all three sites.

Financial Review

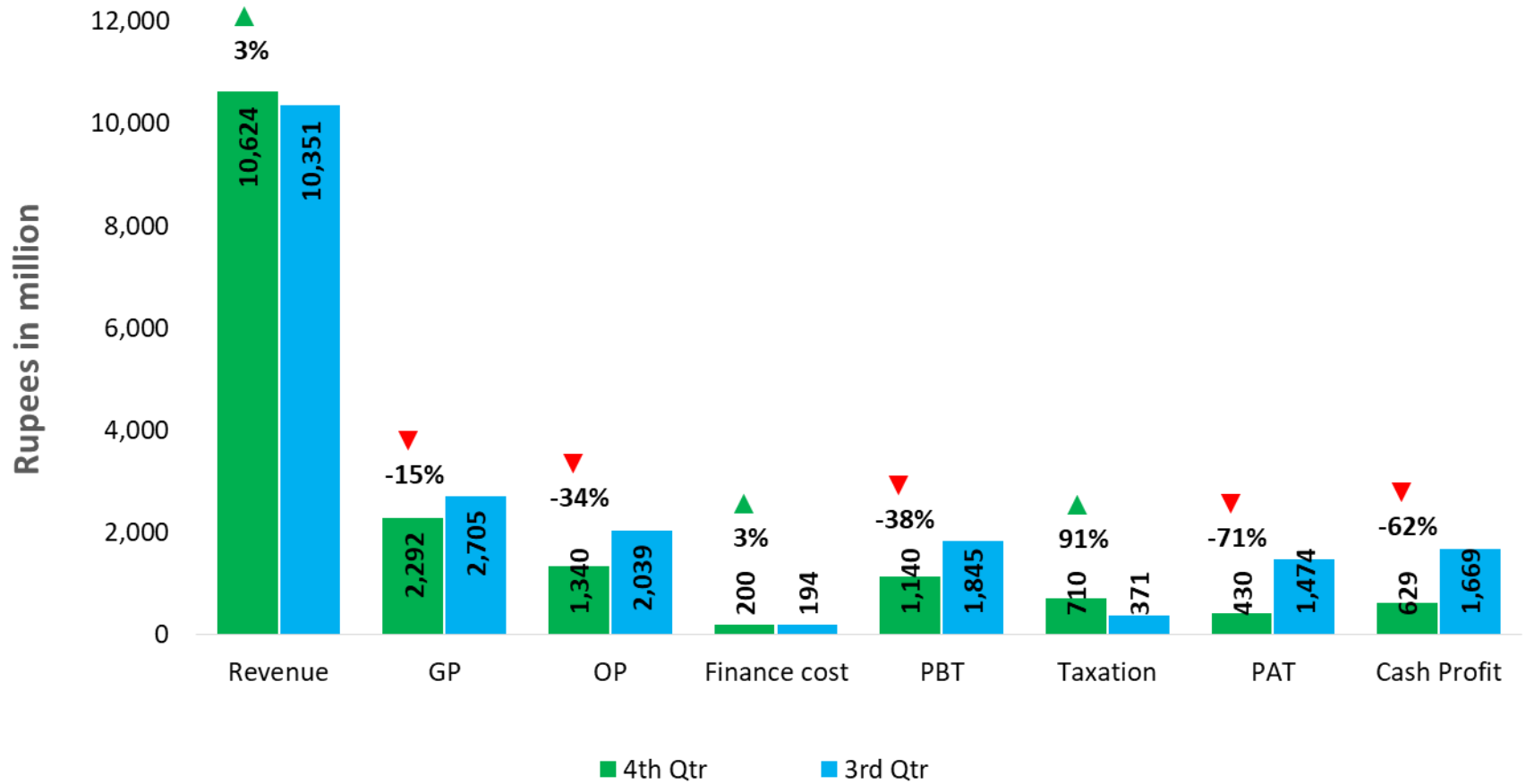
Financials for the Year Ended

30 June 2022

Profit & Loss - 2022 Vs. 2021



4th Quarter (Jun-22) Vs. 3rd Quarter (Mar-22)

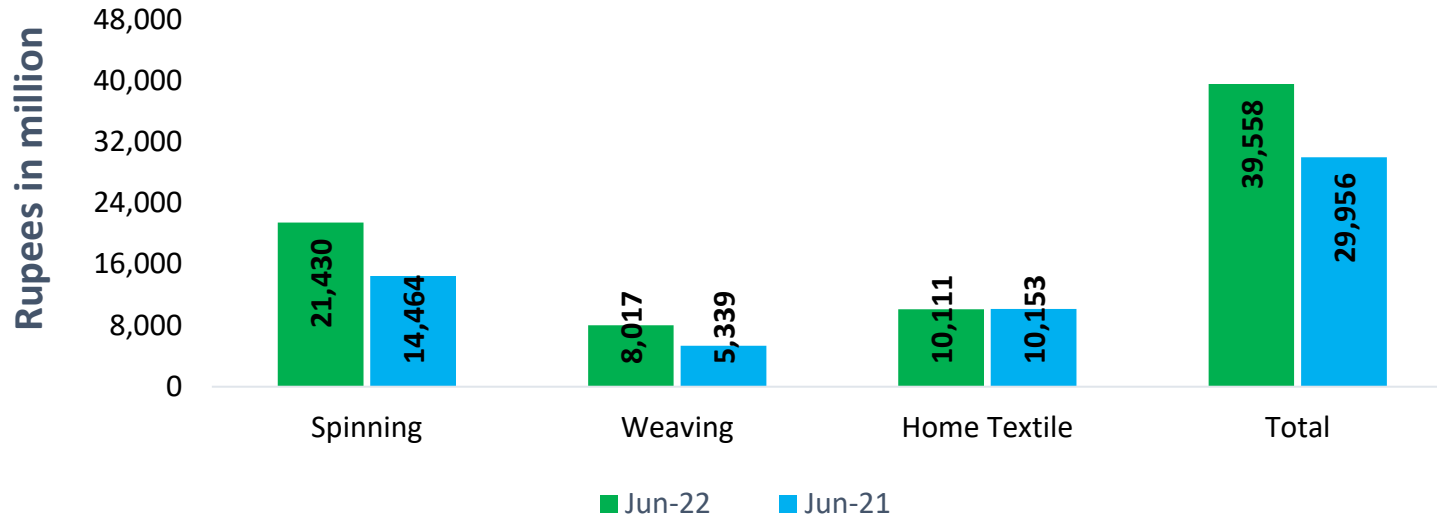


4th Quarter Impact

Key Elements Affecting 4th Quarter & Annual Results:

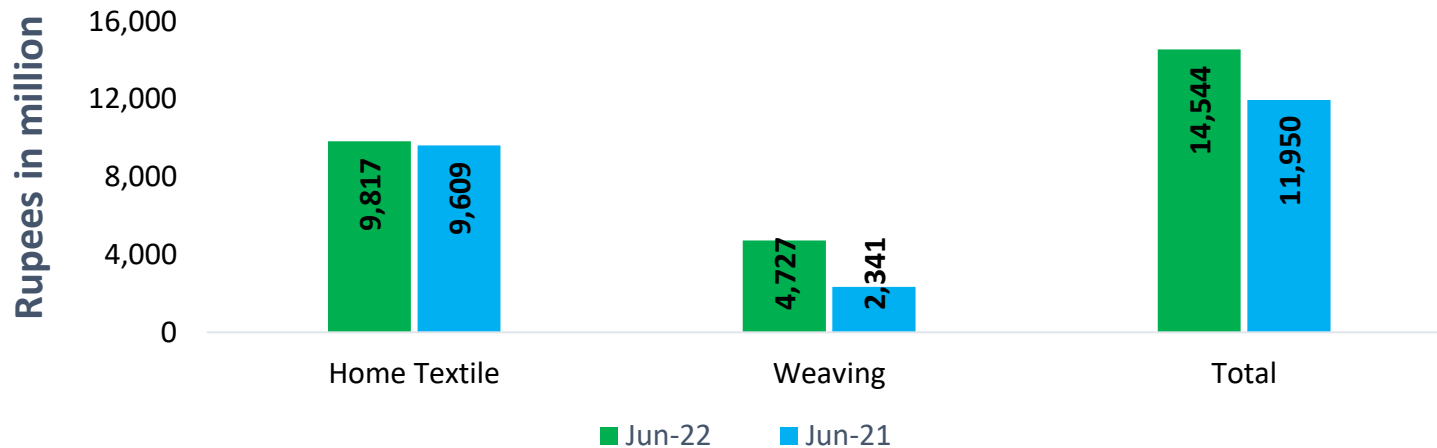
	4th QTR (June 22)		Annual FY 2022	
	Amount	EPS	Amount	EPS
	Rs. In Millions	Rs. / Share	Rs. In Millions	Rs. / Share
PAT before Finance Act adjustments	957	3.20	5,268	17.60
Finance Act adjustments:				
Super Tax @ 10%	(423)	(1.41)	(423)	(1.41)
Related deferred Tax @ 33%	(104)	(0.35)	(104)	(0.35)
Total Super Tax Impact	(527)	(1.76)	(527)	(1.76)
PAT after Finance Act adjustments	430	1.44	4,741	15.84

Division wise Sales - 2022 Vs. 2021



Sales Ratio:	Jun-22	Jun-21
Export	37%	41%
Local	63%	59%

Export Sales - 2022 Vs. 2021



Export Sales:	Jun-22	Jun-21
	\$ In Millions	
Home Textile	55	60
Weaving	26	15
	<hr/>	<hr/>
	81	75

Power Mix

MWh Required **20.81**

FY 2022				Current Rate
Utilization of Sources	%	Cents/kWh	MWh	Cents/kWh
Natural Gas	26%	7.6	5.31	9.9
Bowser Gas	4%	10.9	0.77	12.7
Furnace Oil	11%	12.3	2.37	17.0
High Speed Diesel	0%	18.9	0.05	19.3
National Grid	51%	9.0	10.69	9.1
Solar	8%	-	1.62	-
Total	100%		20.81	

FY - 2022
Average Power
Cost per KWH
8.42 Cents
(Rs. 15.16)

Current
Average Power
Cost per KWH
9.51 Cents
(Rs. 20.92)

Note:- Power cost represents variable fuel cost only.

US \$ Exchange Rate is used @ Rs. 180/- for FY 2022 calculation.

US \$ Exchange Rate is used @ Rs. 220 for current rate calculation.

Thank You

Presenter:

Mohsin Naqvi

Contact Us

Address: 42 Lawrence Road Lahore Pakistan

Tel: 00-92-42-36369915, 00-92-42-36304181

Cell: 00-92-333-4998888

Email: mohsin.naqvi@kmlg.com

Website: www.kmlg.com