



Corporate Briefing

December 2025

- ⚡ This presentation has been prepared by LSE Capital Limited (LSECL) for informational purposes only.
- ⚡ LSECL makes no representation or warranty regarding the accuracy, completeness, or reliability of the information contained herein.
- ⚡ The contents reflect the situation as of the presentation date and may change without notice.
- ⚡ Nothing in this document constitutes an offer, solicitation, or recommendation to buy or sell any securities, nor should it be used as the basis for any investment decision.
- ⚡ Forward-looking statements, if any, are based on assumptions and are subject to risks and uncertainties. Actual results may differ.
- ⚡ This presentation is confidential and may not be reproduced or distributed without prior written consent of LSECL.

LSECL at a Glance

LSE Capital Limited (LSECL) is a **leading transaction advisory** and merchant banking firm in Pakistan, registered as a **Consultant to the Issue (CTI)** under the Public Offering Framework of the Securities & Exchange Commission of Pakistan's (SECP).



With **deep expertise across IPO advisory, mergers & acquisitions, and corporate restructuring/rehabilitation transactions**, **LSECL** delivers **end-to-end solutions** tailored to the diverse needs of the country's business establishments.



LSECL and its promoters have a rich history of having completed many **complex and transformative assignments**. **LSECL** is particularly known for adopting **innovative structuring methods, efficient transaction arrangements** and the **speedier closings** of the assigned mandates.



LSECL's advisory and transaction team has unparalleled skillsets in the capital market industry of the country, having the exposure of multi-faceted roles and responsibilities.



Restructured

Carved out of the successor company of the erstwhile Lahore Stock Exchange (LSE) during 2023.

Adopted An Expanded Objective

"to invest in the emerging growth-oriented companies of Pakistan and support the development of the domestic economy".

Remodeled

As a private equity/investment company to develop a pipeline of IPO-ready companies.

Listed

On the regular counter of Pakistan Stock Exchange (PSX).

LSE Ventures Limited
58,359,794

16%

Sponsors & Associates
171,821,398

47%

Securities & Brokerage Entities
38,565,244

11%

Others/Public
93,560,254

26%

Governance



Mr. Shoaib Mir
Chairman



Mr. Aftab Ahmad Ch.
Chief Executive Officer



Ms. Aasiya Riaz
Non-Executive Director



Hafiz Muddassir Alam
Non-Executive Director



Mr. Muhammad Iqbal
Non-Executive Director

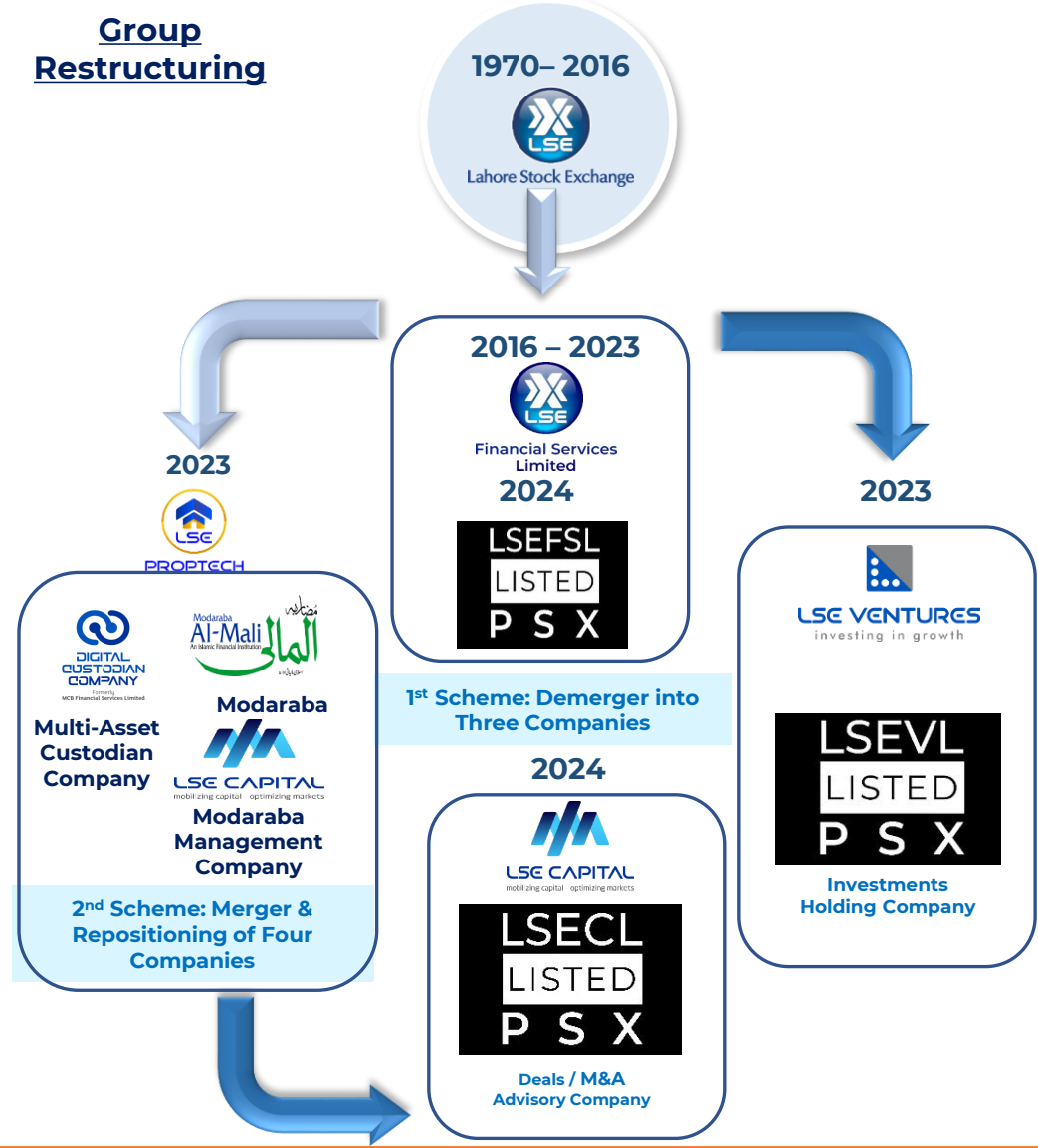


Ms. Shumaila Siddiqui
Independent Director

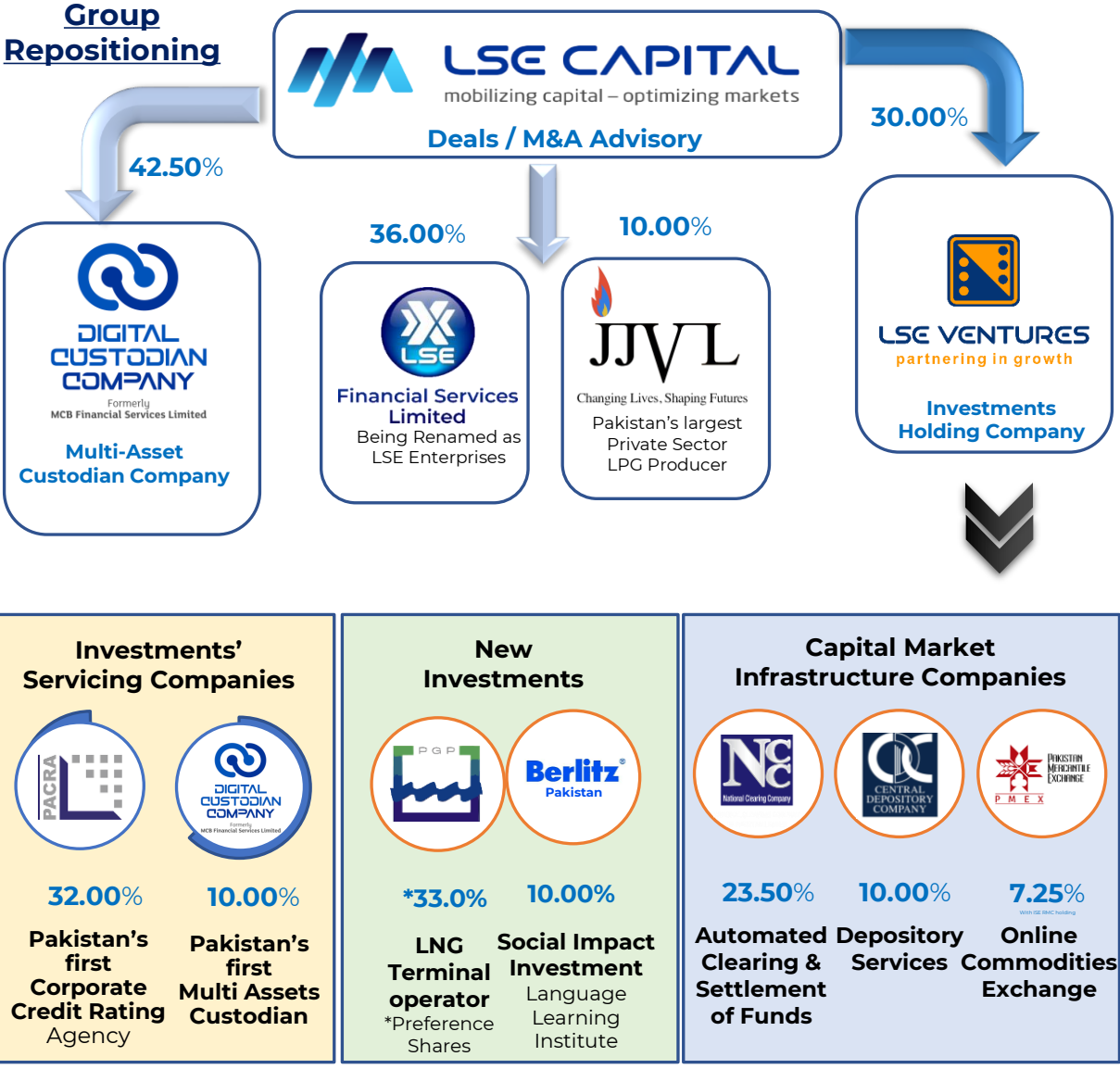


LSE History, Restructuring & Group Positioning

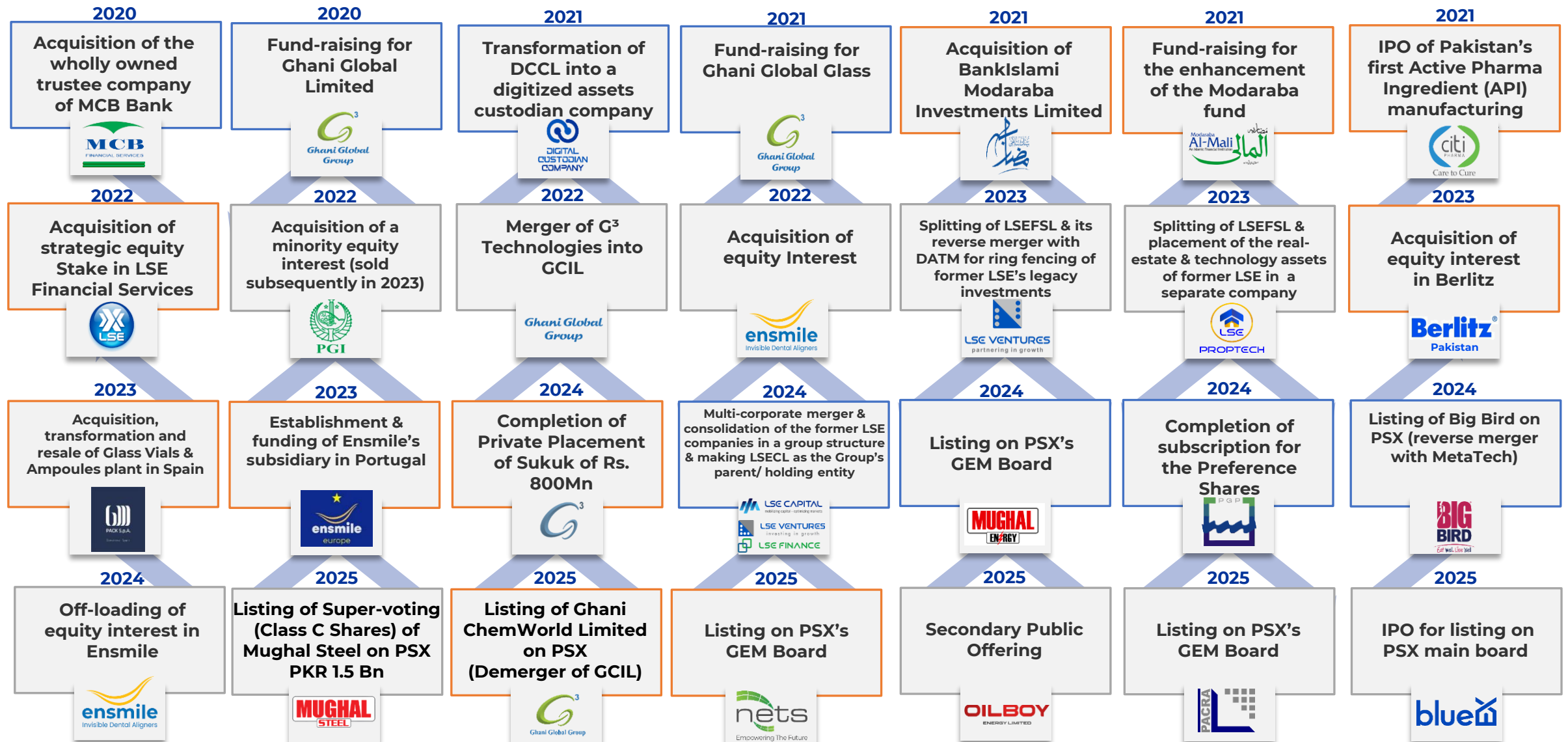
Group Restructuring



Group Repositioning



Transactions Portfolio



Transaction Portfolio & the Team

Ongoing

KAIZEN
REIT/RMC

Launch of Kaizen
REIT Scheme

Ongoing



Balance Sheet
Optimization &
Restructuring of BRRG

Ongoing



Launch of LSE
SPAC-I & II

Ongoing



Establishment of PE
Fund Management
Company

Ongoing



Initial Public
Offering

Ongoing



Listing /
Class B Shares

Ongoing



Strategic
Repositioning/
Funding of PKR
250 Mn

Ongoing



Feasibility for LNG
Production from
Exhaust/Ventures Gases
for JV between Mari
Energies & GCIL

Ongoing



Financial/Project Planning
for the establishment of
Oxygen Producing Project
in Oman

Ongoing



Feasibility for Sindh
Gas Marketing
Company Limited

Ongoing



Feasibility/Financial
Planning for Glass
Bottling Plant

Ongoing



Secondary Public
Offering/Sukuk
Issuance PKR 2.5 Bn

Ongoing



Initial Public
Offering



Amir Zia
Advisor - Investment
Banking & Transaction
Structuring
az@lse.com.pk



Aftab Ahmad Ch.
Head of Strategic
Transactions & Deals
Advisory
aa@lse.com.pk



Muhammad Usman
Head of Transaction
Management & External
Engagements
usman.abbas@lse.com.pk



Inamullah
Head of Corporate &
Regulatory Affairs
inamullah@lse.com.pk



Adil Jahangir
Head of Transaction
Documentation & Executions
Adil.Jahangir@lse.com.pk



Ali Malik
Head of Risk &
Compliance
muhammadalimalik@lse.com.pk



Unique Selling Propositions (USPs)



Capital Market Advisory

Expert guidance in accessing public and private capital markets to fuel strategic growth.



Corporate Finance

Customized financial structuring to drive operational efficiency and long-term value.



Mergers & Acquisitions/Restructurings

Comprehensive deal support that unlocks synergies and navigates complex transitions.



Tax Planning & Efficiency

Proactive tax strategies that maximize savings and ensure regulatory alignment.



LSECL functions as a strategic enabler for companies establishing a presence in Pakistan's capital markets. Leveraging its embedded connectivity with the nation's core financial infrastructure, **LSECL** delivers a unified framework designed to simplify engagement and accelerate execution.



At the heart of **LSECL's** value proposition is its ability to offer cross-functional, composite services under a single institutional umbrella.



This strategic positioning empowers **LSECL** to serve as both a conduit and a catalyst—helping market entrants navigate complexity with precision, while unlocking access to Pakistan's most influential financial platforms.

Stock Performance

Listing



Symbol
LSECL



Listed Sector
INV. BANKS / INV.COS. /
SECURITIES COS



Listing Date
May 2024



Listing Process
Reverse Merger



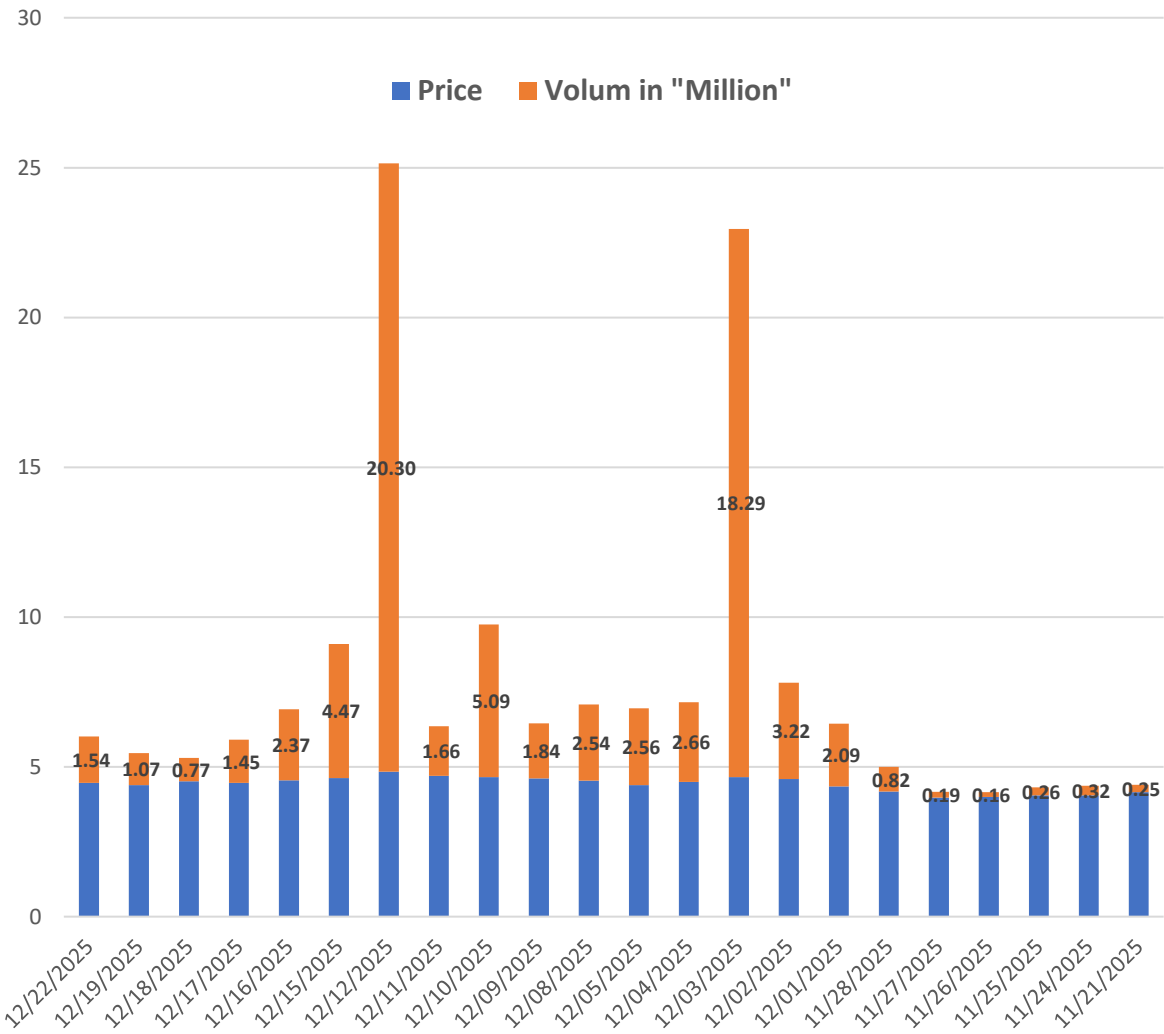
Fund Raised
Nil

Float

	Shares	%age
Equity held with long-term investors (Sponsors & Associates)	230,181,192	64%
Equity held with Securities Brokerages (mostly assigned to PSX as part of minimum capital requirement since demutualization)	38,565,244	11%
Freely tradeable float	93,560,254	26%
	362,306,690	100%

Liquidity

Mkt Cap (PKR Mn)	1,630.38
Mkt Cap (USD Mn)	\$5.82
No of Shares (in Mn)	362.31
52 Weeks High Price (PKR)	10.23
52 Weeks Low Price (PKR)	3.91
6 Months Average Daily Price (PKR)	3.79
6 Months Average Volume (in Mn)	1.48
6 Months Average Value (PKR Mn)	5.59



Financial Highlights

Rupees in '000'	2025	2024
Operating Income	145,428	35,191
Other Income	326,051	96,679
Share of profit of Associates	106,087	33,476
Admin & General Expenses	(191,813)	(65,929)
Finance Cost	(79,259)	(19,887)
Profit before Taxation	306,494	79,529
Taxation	(67,907)	41,476
Net Profit	238,587	121,006
Equity + Revaluation Surplus	3,166,638	2,970,871
Total Asset	3,528,655	3,591,231
Net Asset	3,166,637	2,970,871
Total Liability	362,018	620,359
Shares outstanding (Nos.)	181,153	181,153
Earnings per share EPS	1.32	2.66

